

PLACES TO GO & ACTIVITIES TO DO!



**Big Brothers
Big Sisters®**
OF CENTRAL
MASS & METROWEST



OUTDOOR MATCH ACTIVITIES

- ☀️ Rent a canoe and have a fun day at the lake
- 🌟 Watch a local parade or festival.
- ☀️ Go for a hike and bring a picnic lunch
- 🌟 Visit the a National or State Park
- ☀️ Visit a local orchard or farmers market to enjoy some fresh fruits and food
- 🌟 Set up a roadside lemonade stand
- ☀️ Rent a bicycle for two and tour your city.
- 🌟 Volunteer to build a house with Habitat for Humanity
- ☀️ Whack golf balls at the driving range
- 🌟 Visit a zoo
- ☀️ Walk around the dog park and count the different types of dogs
- 🌟 See live music in an city event
- ☀️ Play a round of disc golf
- 🌟 Find all the living things on a one-foot square of grass
- ☀️ Feed the birds
- 🌟 Train together and participate in a local fun run
- ☀️ Watch the activity at a construction site



ARTS AND CRAFTS

Learn clay or pottery with your Little

Make a collage of your lives with pictures cut from magazines

Paint an original T-shirt

Have an art show featuring your Little's masterpieces

Create a tornado in a bottle (put colored water in a two-liter bottle, connect another bottle to it like an hourglass, turn it over and give it a swirl)

Build a log cabin out of Popsicle sticks and glue.

Get creative with some lumber, hammer and nails

Build and paint a birdhouse

Build paper planes and see whose can fly the furthest, longest, etc.

Paint, refinish, or decoupage an old piece of furniture

Build something together. This could be anything from a board game to a model

Maintain a scrapbook of all the things you do together. Include ticket stubs, menus, pictures, brochures, programs and other mementos

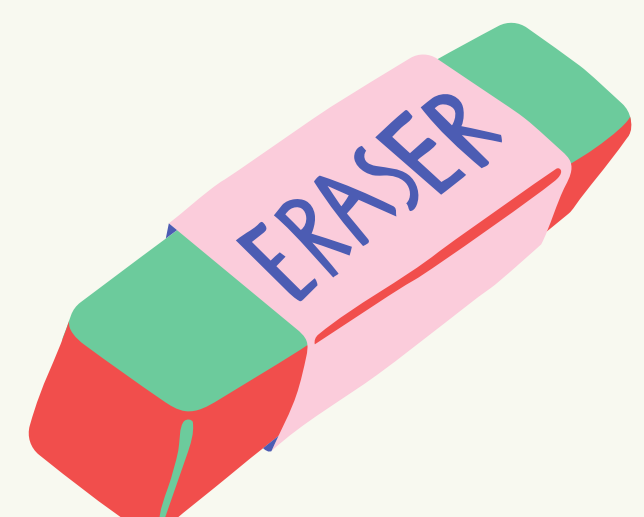
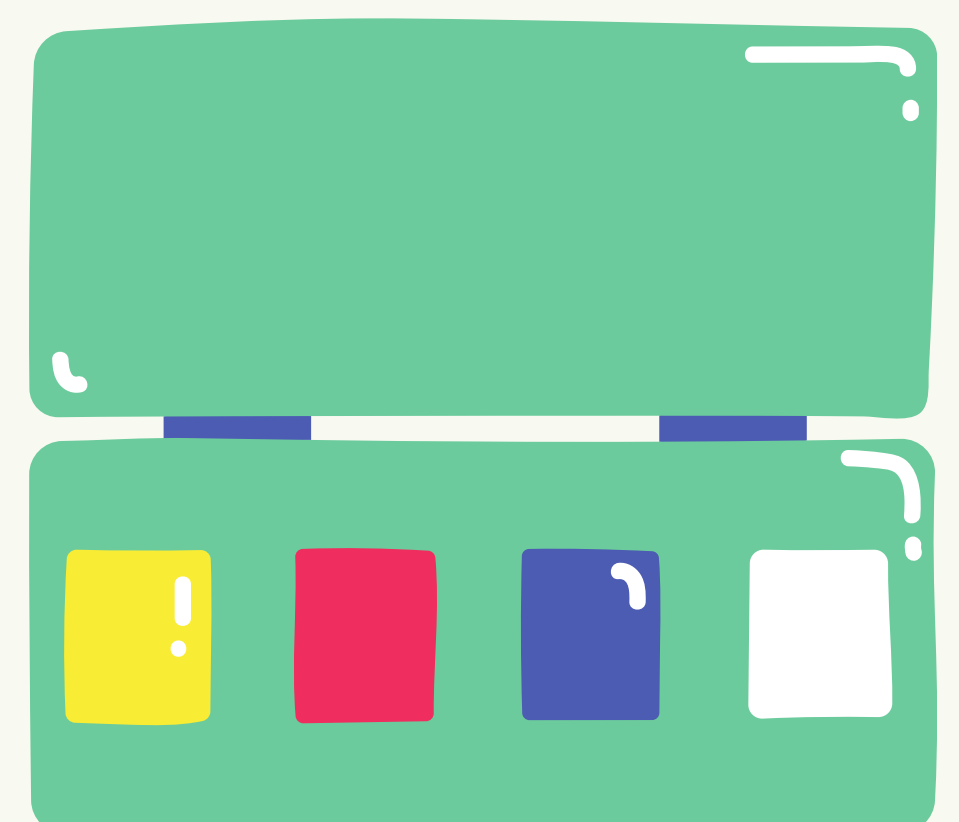
Decorate eggs - not just at Easter

Create a necklace or bracelet.

Take an art class or lesson together

Learn a new craft together (like knitting or making a mosaic)

Write and illustrate a short story together



EDUCATIONAL ACTIVITIES

Visit a Museum of Art

Take a self-guided tour of a local historic location

Visit the a National or State Park

Read biographies of people who did great things and let your Little know they can do great things too

Write a letter to your Congressional representatives regarding an issue important to both of you

Check out a tree identification book from the library and discover which trees grow in your neighborhood

Using the letters from a big word, see how many smaller words you can create

Tour the state capitol and maybe even meet the Governor

Take your Little with you to vote

Open the hood of a car and point out various parts of the engine

Visit the Mayor's Office or other government buildings

Research famous inventors, writers, or other famous people that intrigues your Little

Using play money, show your Little how you spend the money you earn

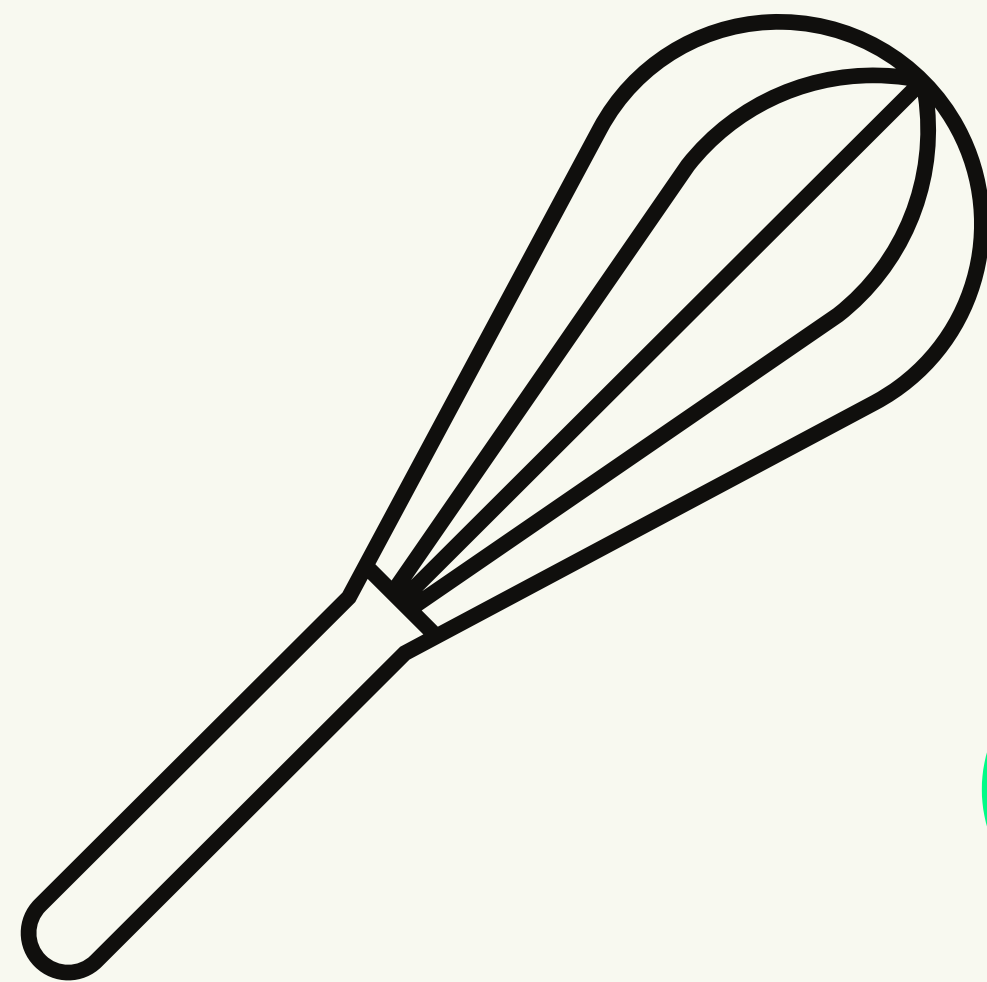
Learn CPR

Learn 10 new words in a foreign language.



FOOD ACTIVITIES

- Roast marshmallows with toothpicks over the flame of a candle
- Make mini pizzas using English muffins
- Squeeze fresh orange juice
- Roast pumpkin seeds in the oven
- Bake and frost cutout cookies
- Make foods from around the world and learn how people live in that country
- Create s'mores with graham crackers, marshmallows, and chocolate chunks. Heat them in the oven, microwave, or over an open fire
- Make a loaf of bread from scratch
- Pick a new recipe, then go shopping and prepare the food together. You can even make a cookbook of your favorite recipes that you make
- Learn to make homemade root beer or ice cream.
- Make a fondue meal or a fruit-and-cake fondue for dessert
- Make a thin layer of Jell-O and carve it into letters, numbers, figures, etc
- Finger paint with chocolate, lemon or strawberry pudding



MORE ACTIVITIES!

- Take your Little on a tour of your work and describe what you do
- Write and illustrate a short story together
- Create a list of dream colleges, but also help your Little to discover state and local colleges.
- Plan an imaginary vacation
- Learn a simple magic trick and amaze your friends
- Make a 'bucket list' with your Little
- Start a coin or stamp collection
- Learn to program a computer in BASIC language
- Order sea monkeys or Chia pets and watch them grow
- Pick and deliver flowers to a nursing home
- Teach your pet a new trick
- Learn to identify three constellations
- Go ice-skating, get hot chocolate afterwards
- Have a Monopoly tournament
- Take a book out of the library about a profession you both know nothing about
- Tell each other stories. Start by giving the other a starting sequence, such as "I was walking to school the other day and I saw..."
- Make a Time Capsule and bury it in your yard

Activity Locations

Acton

Acton Bowladrome

275 Main St

978-263-7638

<https://www.actonbowl.com/>

Discovery Museum

177 Main St

978-264-4200

<https://www.discoveryacton.org/>

The Happy Chocolatier

340 Great Rd

978-429-8485

<https://www.thehappychocolatier.com/>

Acton Arboretum

10 Taylor Rd.

978-264-9631

<http://actonarboretum.org/>

Nathaniel Allen Recreation Park Area

26 Ledgerock Way

<http://www.acton-ma.gov/312/NARA-Park>

Ashland

Ashland State Park

162 W Union St

508-435-4303

<https://www.mass.gov/locations/ashland-state-park>

Modelville Hobby Electronic

280 Eliot St

508-881-7616

www.modelvillehobby.com

Stone Park

73 Summer St

<https://www.yelp.com/biz/stone-park-ashland>

Ashland Farmer's Market

125 Front St

<http://www.ashlandfarmersmarket.org/>

Auburn

Fields and Playgrounds in Auburn

http://www.auburnguide.com/Pages/AuburnMA_Parks/fields

Horgan Arena.

403 Oxford St

508-832-7201

<https://fmcicesports.com/rink/auburn-horgan-arena/>

The Art Lab and Gallery

716 Southbridge St

508-789-7035

<https://www.theartlabandgallery.com/home.html>

AMF Auburn Lanes

101 Southbridge St

508-791-5700

www.amf.com/location/amf-auburn-lanes-ma

Crystal Caves

790 Southbridge St

508-832-0797

www.crystalcaves.com

Boxborough

Nashoba Valley Olympia Ice Skating Rink

34 Mass Ave

978-263-3020

www.skatenashoba.com/

Boylston

Tower Hill Botanic Garden

11 French Dr

508-869-6111

www.towerhillbg.org

Charlton

Capen Hill Nature Sanctuary

56 Capen Rd

508-248-5516

www.capenhill.org

Buffumville Lake

48 Old Oxford Rd

<https://www.nae.usace.army.mil/Missions/Recreation/Bufumville-Lake/>

Dover

Noanet Woodlands

Powisset St

508-785-0339

Peters Reservation

Farm Rd

<http://www.thetrustees.org/places-to-visit/metro-west/peters-reservation.html>

Powisset Farm

39 Powisset St

508-785-0339

<http://www.thetrustees.org/places-to-visit/metro-west/powisset-farm.html>

Pegan Hill

Pegan Lane

<http://www.thetrustees.org/places-to-visit/metro-west/pegan-hill.html>

Chase Woodlands.

Farm Rd

<http://www.thetrustees.org/places-to-visit/metro-west/chase-woodlands.html>

Dudley

Pierpont Meadow

38 Marsh Rd

978-464-2712

Framingham

Amazing Things Arts Center

160 Hollis St

(508) 405-2787

AMC Movie Theater

22 Flutie Pass

508-875-6151

www.amctheatres.com

Callahan State Park

Millwood St

508-653-9641

Cochituate Rail Trail

<https://www.trailink.com/trail/cochituate-rail-trail/>

Cushing Memorial Park

80 Dudley Rd

508-532-5411

Eastleigh Farm

1062 Edmands Rd

<https://eastleighfarm.wixsite.com/eastleighfarm>

Framingham History Center

3 Oak Street

508-626-9091

<https://framinghamhistory.org/>

Fun and Games

50 Worcester Rd

508-879-5707

www.gamesandgolf.com/funandgames/

Hanson's Farm

20 Nixon Rd

508-877-3058

www.hansonsfarms.sowebs.com

Jump Around

280 Worcester Rd #103c

508-318-8823

www.jumparoundsite.com/

New England Wildflower Society in the Woods

180 Hemenway Rd

508-877-7630

<http://www.newenglandwild.org/visit/Garden-in-the-Woods>

Whimsy

686 Worcester Rd

508-626-8989

<http://whimsyartsandcrafts.com/index.htm>

Plaster Fun Time

855 Worcester Rd

508-879-3200

www.plasterfuntime.com

Grafton

Hassanamesit Woods

<https://www.graftonma.gov/conservationcommission/slideshows/hassanamesit-woods>

Holden

Gale Free Library

23 Highland St

508-210-5560

www.galefreelibrary.org

Eagle Lake Wildlife Sanctuary

Causeway Street

978-464-2712

<https://www.massaudubon.org/get-outdoors/wildlife-sanctuaries/eagle-lake>

Holliston

Patt's Blueberry Farm

577 Gorwin Dr

508-429-6795

<https://www.facebook.com/Patts-Blueberries-199622883500358/>

Putts and More

750 Concord St

508-561-2902

www.puttsandmore.com

Hopkinton

Boating in Boston

286 Cedar St

617-299-3392

pedal boating <https://boatinginboston.com>

Hopkinton State Park

164 Cedar St

508-435-4303

Whitehall State Park

300 Wood S

508-435-4303

<https://www.mass.gov/locations/whitehall-state-park>

Start Line of Boston Marathon

Main St

<https://www.baa.org/>

Weston Nurseries

93 E Main St

508-435-3414

<https://www.westonnurseries.com/>

Hudson

Assabet River Trail

Wilkins St

https://www.tripadvisor.com/Attraction_Reviewg41619d12911548ReviewsAssabet_River_Trail-Hudson_Massachusetts.html

New City Microcreamery

28 Main St

978-333-7144

www.newcitymicrocreamery.com

Puzzlescapes

45 Main St, Suite 301

844-789-2166

<https://www.puzzlescapehudson.com/>

Roller Kingdom

5 Highland Park Ave

978-562-3439

<https://rollerkingdom.com/>

Leicester

Pyramids Disc Golf Course

103 Marshall St

508-754-3472

<https://www.marshallstreetdiscgolf.com/about-us>

Tatnuck Driving Range

55 Marshall St

508-756-9944

<http://tatnuckdrivingrange.com/>

Marlborough

Apex Entertainment Center

21 Apex Dr

508-251-8666

<https://www.apexentertainmentcenter.com/>

Goldfish Swim School

43 Apex Dr

508-905-5117

<https://www.goldfishswimschool.com/marlborough/?L=true>

Navin Arena

451 Bolton St

508-624-5580

<https://fmcicesports.com/rink/marlboro-navin-skating-arena/>

Trombetta's Farm

655 Farm Rd

508-485-6429

www.trombettasfarm.com

New England Sports Center

121 Donald Lynch Blvd

508-229-2700

<http://www.nes.com/PublicIceSchedule.asp>

Maynard

6 Bridges Gallery

77 Main St

978-897-3825

www.6bridgesgallery.com

Art Signals Studio

16 Nason St

978-891-3411

www.artsignalsstudio.com

Fine Arts Theatre Place

19 Summer St

978-298-5626

www.fineartstheatreplace.com

Maynard Public Library

77 Nason St

978-897-1010

<https://www.maynardpubliclibrary.org/>

Milford

Pinz

110 S Main St

508-473-6611

<https://pinzbowl.com/milford-ma/>

Upper Charles Bike Trail

Dilla St, Lake Douisa

<http://milfordtrail.org/home.aspx>

Goldfish Swim School

350 East Main St

508-639-1144

<https://www.goldfishswimschool.com/milford?L=true>

Millbury

Elm Draught House Cinema

35 Elm St

508-865-2850

<https://www.facebook.com/pages/ElmDraughtHouseCinema/273937235949810>

Blackstone Valley: Cinema de Lux

70 Worcester- Providence Turnpike

800-315-4000

<https://www.showcasecinemas.com/theatre/8703/blackstonevalley14cinema-delux/millbury/ma?tab=showtimes>

Blackstone River Bikeway

www.blackstoneheritagecorridor.com

Stowe Farm

15 Stowe Rd

508-865-9860

<http://www.stowefarm.com/>

Natick

Cochituate State Park

43 Commonwealth Rd

508-653-9641

<https://www.mass.gov/locations/cochituate-state-park>

William L. Chase Arena

35 Windsor Ave

508-655-1013

www.fmcicesports.com

Natick History Museum

58 Eliot Street, lower level (Bacon Free Library building)

<https://www.natickhistoricalsociety.org/visit-museum/>

South Natick Dam Park

9 Pleasant St

<http://natickma.gov/1123/South-Natick-Dam-Park>

Broadmoor Wildlife Sanctuary

280 Eliot St

<https://www.massaudubon.org/getoutdoors/wildlifesanctuaries/broadmoor>

Natick Mall

1245 Worcester St

<https://www.natickmall.com/en.html>

Jordan's Furniture IMAX Theater

1 Underprice Way

508-844-5170

<https://www.jordans.com/about-us/store-locations/natick>

Lookout Farm

89 Pleasant St

508-651-1539

<http://lookoutfarm.com/>

Natick Morse Institute Library

14 East Central St

508-647-6520

<https://morseinstitute.org/>

Northborough

PYOP Studio

290 W. Main St

508-393-3100

<http://www.pyopstudio.com/>

Assabet Park

South St & Gale St

508-393-5034

www.facebook.com/pages/Assabet-Park

Tougas Family Farm

234 Ball St

508-393-6406

<http://tougasfamilyfarm.com/>

Hiking Trails

www.northboroughtrails.org/trails.php

Northbridge

West End Creamery

481 Purgatory Rd

508-234-2022

www.westendcreamery.com

West Hill Park

23 W Hill Rd

508-278-2511

www.ohranger.com/west-hill-dam

Oxford

Oxford Free Public Library

339 Main St

508-987-6003

www.oxfordmapubliclibrary.org/

Paxton

Moore State Park

1 Sawmill Rd

508-792-3969

www.mass.gov/eea/agencies/dcr/massparks/region-central/moore-state-park.html

Boynton Park

599 Mower St

<http://www.worcesterma.gov/city-parks/boynton-park>

Princeton

Krashes Field Complex

100 E Princeton Rd

www.town.princeton.ma.us/pages/princetonma_recreation/facilities

Princeton Public Library

2 Town Hall Dr

918-464-2115

<https://sites.google.com/site/princetonpubliclibrarywebsite/Wachusett>

Meadow Wildlife Sanctuary

113 Goodnow Rd

978-464-2712

<https://www.massaudubon.org/getoutdoors/wildlifesanctuaries/wachusett-meadow>

Wachusett Mountain Reservation

345 Mountain Rd

978-464-2987

<https://www.mass.gov/locations/wachusett-mountain-state-reservation>

Rutland

Community Pool

250 Main St

508-886-0048

http://www.townofrutland.org/pages/rutlandma_recreation/Pool2018

Rutland State Park

2 Crawford Rd

508-886-6333

<https://www.mass.gov/locations/rutland-state-park>

Rutland Free Public Library

280 Main St

508-886-4108

<http://www.rutlandlibrary.org/>

Sherborn

Sherborn Library

4 Sanger St

508-653-0770

<https://sherbornlibrary.org/>

Rocky Narrows

87 Forest St

508-785-0339

<http://www.thetrustees.org/places-to-visit/metro-west/rocky-narrows.html>

Sunshine Farm

41 Kendall Ave

508-655-5022

<http://sunshinefarmma.com>

Shrewsbury

Jump Nation

810 Boston Turnpike

508-845-7529

www.jumpnationparty.com/

Hebert's Candy Mansion

574 Hartford Turnpike

508-845-8051

www.hebertcandies.com/

Claytime

124 Boston Turnpike 508-798-9950 Prices vary

<https://www.claytimestudio.com/>

Bowlero

405 Boston Turnpike

508-754-7050

www.amf.com/location/amf-town-country-lanes-ma

Southborough

Chestnut Hill Farm

9 Chestnut Hill Rd

413-212-8492

<http://www.thetrustees.org/places-to-visit/metro-west/chestnut-hill-farm.html>

Expressions Art Bar

162 Cordaville Rd, Suite 182

508-475-5664

<http://www.expressionsartbar.com/index.php>

Golf and Learning Center

20 Turnpike Rd

508-480-9992

<http://southboroughgolf.com/>

Southbridge

Charlton St Mountain Bike Trails

Charlton Street School

https://www.tripadvisor.com/Attraction_Reviewg41844d4014258ReviewsCharlton_Street_Mountain_Bike_TrailsSouthbridge_Massachusetts.html

Optical Heritage Museum

12 Crane St

774-230-8016

<http://www.opticalheritagemuseum.com/>

Thompson Family Forever

904 Eastford Rd 508-347-9144

http://www.opacumlt.org/thomson_family.html

Westville Lake Recreation Area

125 Wallace Rd

978-318-8848

Spencer

Spencer Trails, Parks, and Recreation

http://www.spencerma.gov/Pages/SpencerMA_Bcomm/ParksRec/recreationalfacilities

Oakwood Farm Christmas Barn

1 Northwest Rd

508-320-0389

<http://www.christmas-barn.com/index.html>

Sterling

Davis Farmland

145 Redstone Hill Rd

978-422-6666

<https://davisfarmland.com/>

Davis' Mega Maze

142 Redstone Hill Rd

978-422-8888

<http://davismegamaze.com/>

Clearview Farm

4 Kendall Hill Rd

978-422-6442

<http://clearviewfarmstand.com/index.htm>

Mass Central Rail Trail Bean Road

http://bikeitorhikeit.org/mass_central_rail_trail_sterling.htm

Mulligan's Mini Golf

124 Leominster Rd

978-422-5022

<http://www.mulligansminigolf.com/>

Rota Spring Farm

117 Chace Hill Rd

978-365-9710

<http://www.rotaspringfarm.com/>

Stow

Shelburne Farm

106 W Acton Rd

978-897-9287

<http://www.shelburnefarm.com/>

Carver Hill Orchard

101 Brookside Ave

978-897-6117

<https://www.carverhillorchard.com/>

Honey Pot Hill Orchards

138 Sudbury Rd

978-562-5666

<http://www.honeypothill.com/>

Pine Bluff Recreation Area

310 Sudbury Rd

978-461-1411

[https://stowma.myrec.com/info/facilities/details.aspx?](https://stowma.myrec.com/info/facilities/details.aspx?FacilityID=14698)

FacilityID=14698

Sturbridge

Brush It Off

559 Main St, Suite 206-207

774-241-3444

<http://brush-it-off.com/>

Tantiusques Trail

Leadmine Rd

[http://www.thetrustees.org/places-to-visit/central-](http://www.thetrustees.org/places-to-visit/central-ma/tantiusques.html)

ma/tantiusques.html

Cinemagic Stadium Theater

100 Charlton Rd

508-347-3609

<https://cinemagicmovies.com>

Old Sturbridge Village

1 Old Sturbridge Village Rd

508-347-0290

<https://www.osv.org/>

Wells State Park

159 Walker Pond Rd

508-347-9257

Sudbury

Assabet River National

680 Hudson Rd

978-562-3614

https://www.fws.gov/refuge/Assabet_River/

Fairbank Community Center

40 Fairbank Rd

978-443-1092

<http://sudburyrec.com/info/default.aspx>

Wayside Historical Sites

72 Wayside Inn Rd

<http://www.wayside.org/planning-your-visit/>

Storybook Trail at Wolbach Farm

18 Wolbach Rd

<https://www.svtweb.org/news/storybook-trail-opens-wolbach-farm>

Sutton

Purgatory Chasm

198 Purgatory Rd

508 234-3733

Marion's Camp Town Beach 4 Tuttle Rd 508-865-8720

at Singletary Lake

\$5 Per person

Upton

Upton State Forest

205 Westboro Rd

508-278-6486

<https://www.mass.gov/locations/upton-state-forest>

Kiwanis Beach

99 Kiwanis Beach Rd

Upton Conservation Land and Trails

<https://www.uptonma.gov/land-stewardship-committee/pages/upton-conservation-land-and-trailmaps>

Wayland

Wayland Farmer's Markets

397 Boston Post Rd

<http://www.russellsgardencenter.com/html/winterFarmersMarket.html>

Wayland Town Beach

26 Parkland Dr

508-358-7572

https://www.bostoncentral.com/activities/wayland_town_beach/p334.php

Wayland Free Public Library

5 Concord Road

508-358-2311

<https://waylandlibrary.org/>

Webster

Mohegan Bowl

51 Thompson Rd

508-949-2695

<https://moheganbowl.com/>

Memorial Beach at Webster Lake

Memorial Beach Dr

508-949-3800

Athletix United

37 Sutton Rd

508-461-5533

<https://www.spiritcentralsouth.com/index.php>

West Boylston

West Boylston Cinema

101 W Boylston St

508-835-8888

<http://www.wbcinema.com/>

Westborough

Xtreme Craze

166 Milk St

508-366-6366

<https://www.xtremecraze.us/westboro/directions/>

Nourse Farm

70 Nourse St

508-366-2644

<http://www.noursefarm.com/>

MassWildlife

1 Rabbit Hill Road

508-389-6300

<http://www.mass.gov/eea/agencies/dfg/dfw/>

Worcester

Green Hill Park

50 Skyline Dr

<http://www.worcesterma.gov/city-parks/green-hill-park>

Central Rock Gym

299 Barber Ave

508-582-7625

<https://centralrockgym.com/worcester/kids/family-climb-weekend/>

Worcester Art Museum

55 Salisbury St

508-799-4406

<http://www.worcesterart.org/>

Ecotarium

222 Harrington Way

508-929-2700

<http://www.ecotarium.org/>

Lake Quinsigamond State Park

10 North Lake Ave

508-755-6880

Regatta Point Sailing

<https://www.regattapoint.org/>

Worcester Center for Crafts

25 Sagamore Rd

508-753-8183

<http://www.worcester.edu/WCC/>

Worcester Public Library

3 Salem Square

508-799-1655

<https://www.mywpl.org/>

Quinsigamond State Park

10 N. Lake Ave

<https://www.mass.gov/locations/quinsigamond-state-park>

Fidelity Bank Worcester Ice Center

112 Harding St

774-530-6217

<http://www.worcesterice.com/>

Massachusetts Pirates DCU Center

50 Foster St

<http://masspiratesfootball.com/home/>

***THE FOLLOWING WEBSITE LISTS LIBRARIES THAT OFFER A FREE PARKING PASS FOR MA STATE PARKS: <https://www.mass.gov/service-details/find-where-you-can-borrow-a-parkspass>**

***Remember to check Groupon for new and discounted activity ideas in your area! www.groupon.com**

